

Land south of Bury Road Barrow



Welcome

Welcome to Bloor Homes' community workshop regarding the land south of Bury Road, Barrow.

Bloor Homes is promoting the land south of Bury Road through the emerging West Suffolk Local Plan and Barrow-cum-Denham Neighbourhood Plan. As part of this we want to engage with local residents regarding what community benefits you want to see delivered.

Additional information about the proposals can be found on the boards, but the main part of the community workshop is interactive engagement with our collection of plans and boards where you will be able to comment and propose community benefits to members of the project team. Likewise, if you have any questions, we are on hand to help.

Your feedback is important to us. The maps on display are interactive, so after looking at the materials, please leave your thoughts and comments directly on the maps, and we will review them.

Alternatively, please fill in a feedback form and leave it with us or return it to our Freepost address.

Tell us what you thought about today's workshop by writing to us at chriscriscione@meeting-place.uk or simply scan the QR code on the right.



Land south of Bury Road Barrow



About Bloor Homes

Bloor Homes has been building quality homes for 50 years and is now one of the UK's leading housebuilders.

As the largest privately-owned housebuilder in the UK, Bloor has a proven track record in delivering successful new communities. Bloor Eastern is based in Bury St Edmunds and takes great pride in delivering high quality and energy efficient homes and our designs have evolved over the years of customer feedback.

Bloor Homes is widely regarded for its build quality and customer satisfaction. With a 5 star HBF rating awarded by its purchasers, it is one of the leading developers on the TrustPilot review forum. Bloor Homes' mission is to create better life experiences, one home at a time.

Learn more about Bloor Homes
www.bloorhomes.com



www.bloorhomes.com

Land south of Bury Road Barrow



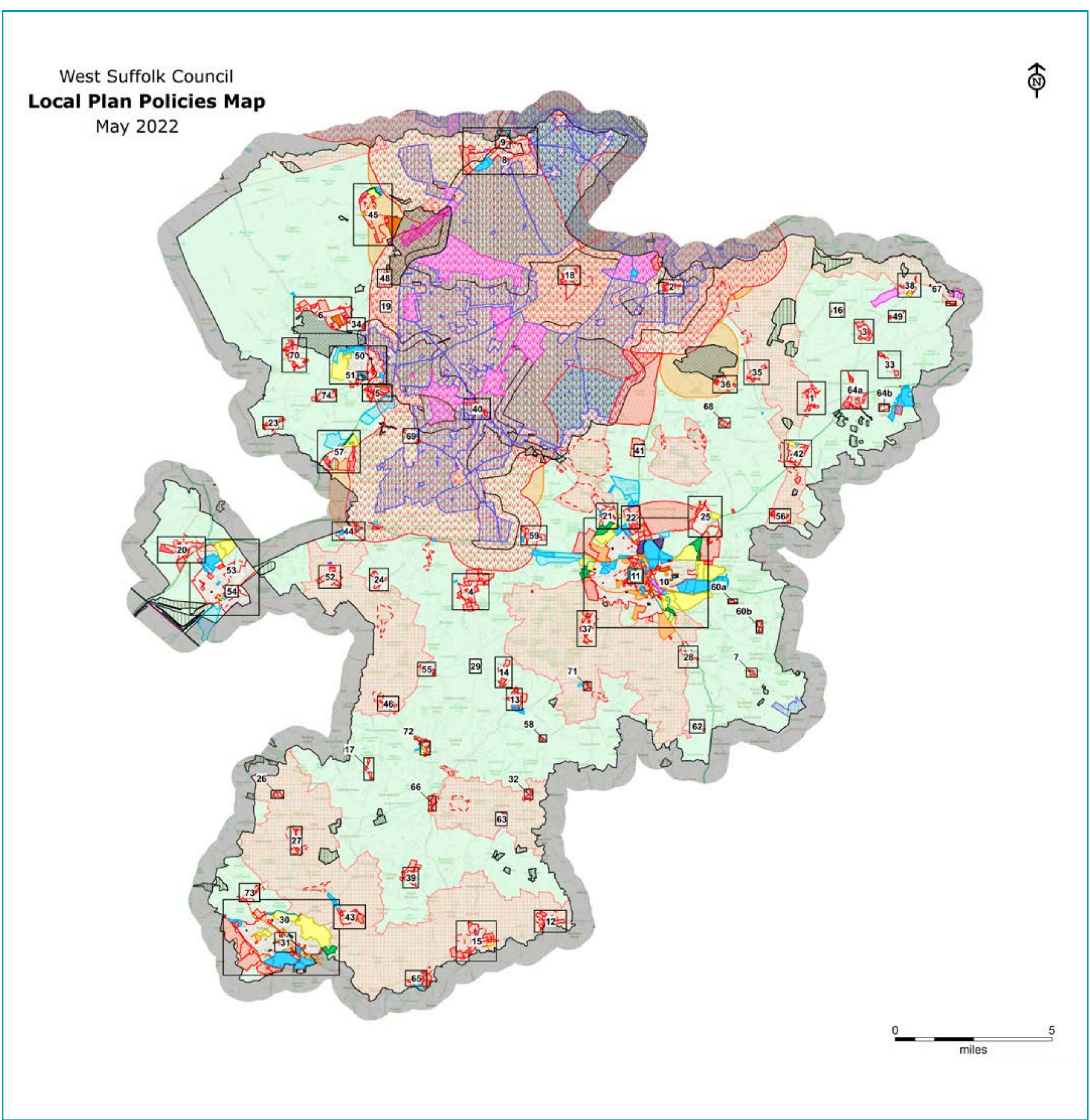
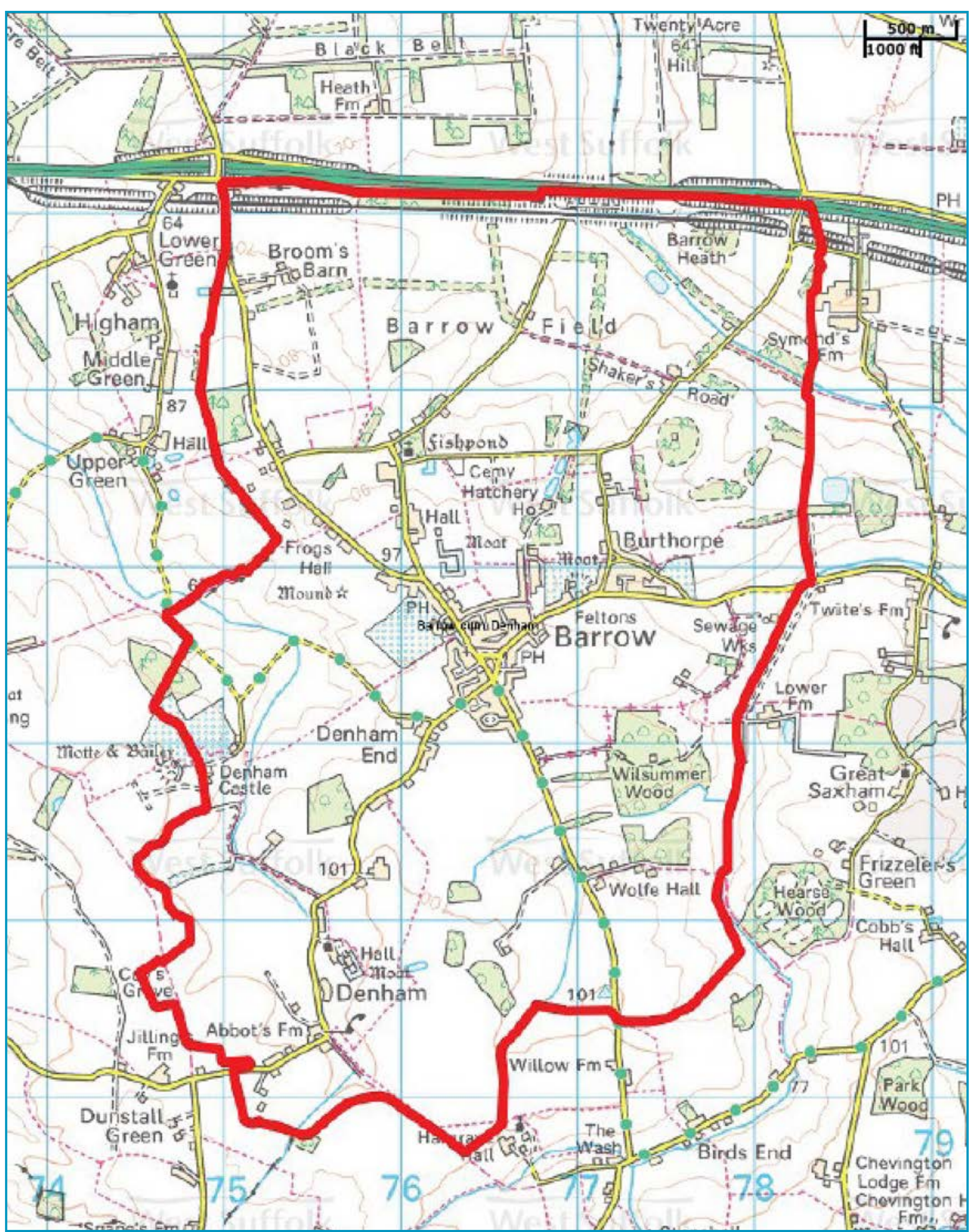
Background

Bloor Homes is promoting the land south of Bury Road in Barrow as part of the emerging development plans being undertaken by West Suffolk District and Barrow-cum-Denham Parish Councils. Proposals include up to 170 new homes and associated community infrastructure.

The site has been identified as the preferred location for new homes in Barrow in the emerging draft West Suffolk Local Plan, which is currently at Preferred Options stage.

The draft Local Plan highlights a number of policies which seek to protect and enhance the important facilities and services in Barrow, whilst meeting the acute growth needs of the district.

Bloor Homes continues to engage proactively with the Parish Council and West Suffolk District Council through their plan-making processes, but would like to hear resident’s views and opinions directly regarding how we can deliver more community infrastructure and further support local services.



Land south of Bury Road

Barrow

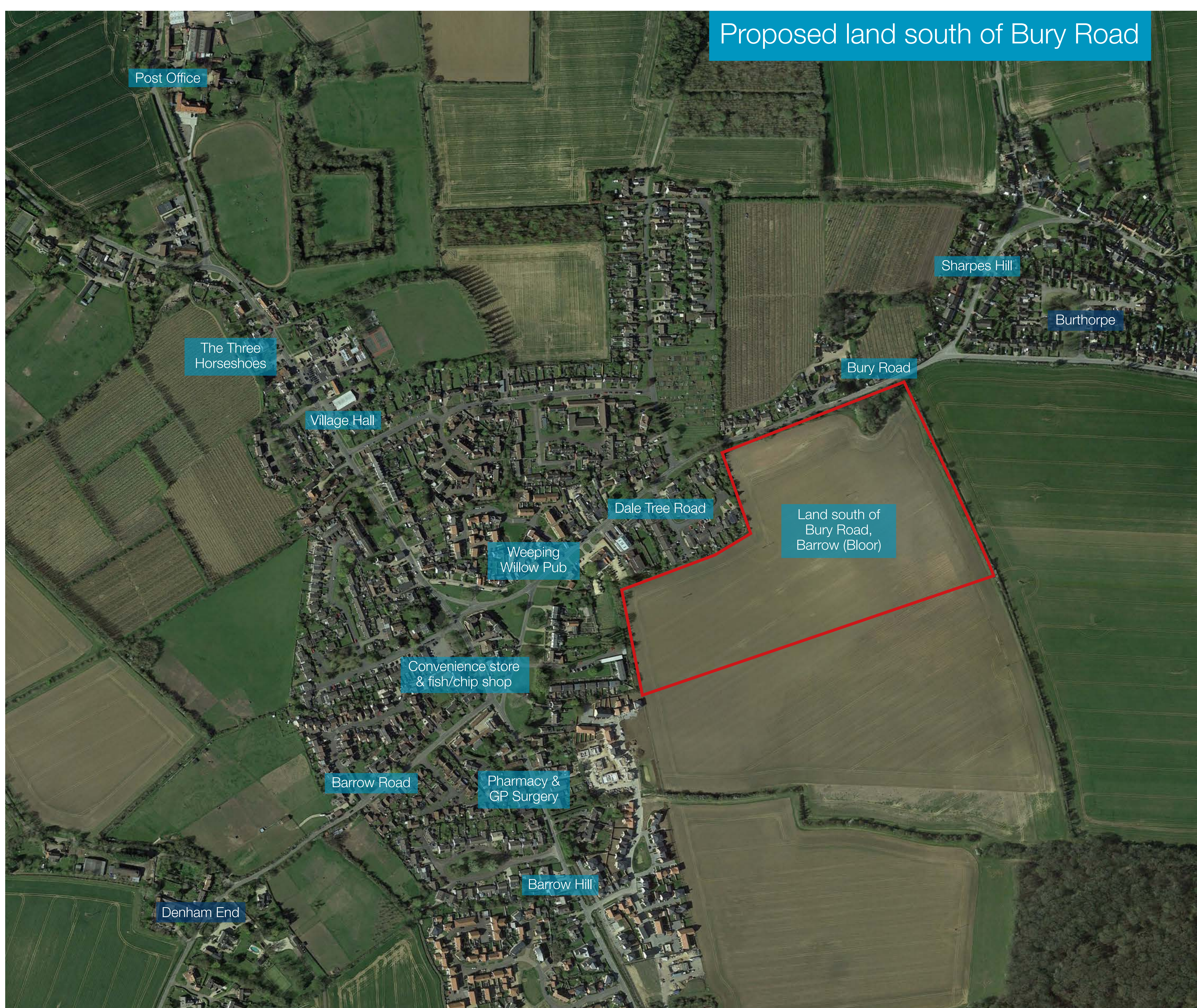
BLOOR HOMES

Community Benefit Opportunities

As part of our approach to exploring development proposals, we want to know what community benefits local residents would like to see delivered from the site.

As well as new and affordable homes the site will deliver public open space, play facilities, ecology and landscape enhancements, drainage improvements and more but we are committed to ensuring that any future development contributes positively to wider facilities in the village.

We have already met with the Parish Council. This is now an opportunity for you to have your say and give us your views on what you would like to see delivered in Barrow.



www.bloorhomes.com

Land south of Bury Road Barrow

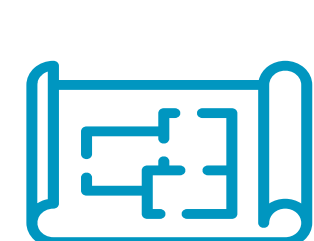


Share your thoughts and ideas

Around the room at this workshop, we have placed a number of the following:



Maps



Plans



Images

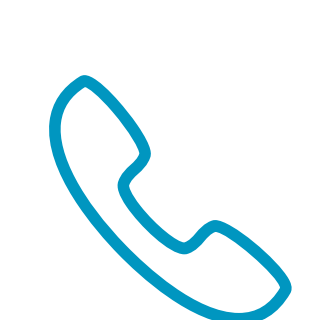


Members of the project team

To share your thoughts and ideas, you can interact with the boards, draw or write on our maps and plans in the room and speak to the project team who are on hand to help. Please also fill out a feedback form and either hand it to a member of the team or leave it in the box provided. Alternatively, take it with you and return it via our Freepost address.

We will consider all feedback provided during the workshops and take on board comments wherever possible as we continue to promote the site for development.

Contact us



Call us on our dedicated Freephone line:
0800 148 8911 (Monday-Friday 9am - 5:30pm)



Email us at **chriscriscione@meeting-place.uk**



Write to us at: **Freepost MPC CONSULTATION**
(no stamp is needed!)